

Direct Operated Precision Regulator

Sensitivity
Within
0.2% F.S.



Energy saving,
Air consumption

80% reduction
(SMC comparison)

* Comparison under the same condition of P2=0.3 MPa

Conventional
4 to 6 ℓ/min (ANR) or less



ARP20/30/40
0.8 ℓ/min (ANR) or less

Renewal of the direct operated precision regulator ARP3000 series!!

Expanded Lineup

3 types of set pressure and the body size allow more freedom in designing a circuit.

Model	ARP20(K)	ARP30(K)	ARP40(K)	
Setting	0.2 MPa	▲	▲	▲
	0.4 MPa	●	●	●
	0.6 MPa	▲	▲	▲
Port size	1/8	●	—	—
	1/4	●	●	●
	3/8	—	●	●
	1/2	—	—	●

●: Standard ▲: Semi-standard



● Repeatability within $\pm 1\%$ F.S. (or ± 3 kPa*)

* at 0.2 MPa

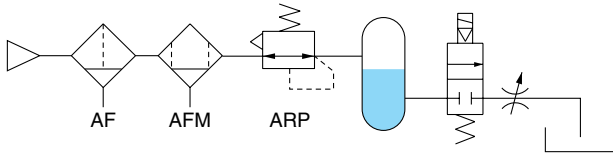
● With reverse flow function (ARP20K/30K/40K)

Installable between a solenoid valve and a cylinder



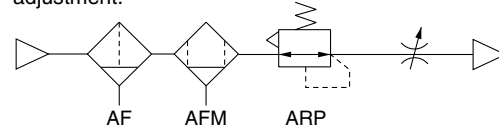
Applications

a Apply a constant pressure to fluid.



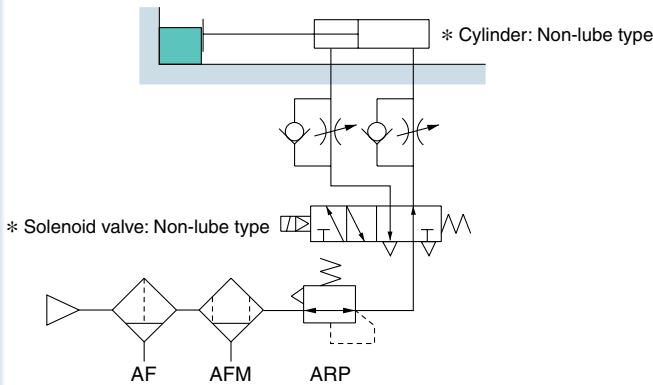
b Adjust the blow-line pressure.

Sensitivity within 0.2% F.S. allows more precise pressure adjustment.



c Control a clamping force by precise pressure control.

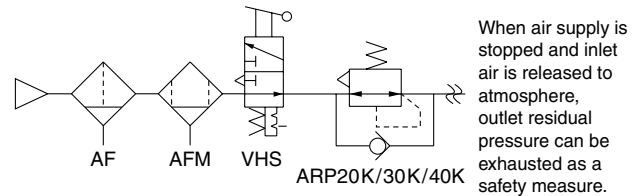
Sensitivity within 0.2% F.S. allows more precise pressure adjustment. Repeatability within $\pm 1\%$ F.S. (or ± 3 kPa) allows constant clamping force.



d Release residual pressure with the reverse-flow function.

● Residual pressure circuit

Also exhausts residual pressure completely.



Specifications

Model		ARP20(K)	ARP30(K)	ARP40(K)
Port size		1/8, 1/4	1/4, 3/8	1/4, 3/8, 1/2
Fluid		Air		
Proof pressure		1.2 MPa		
Max. operating pressure		0.7 MPa		
Set pressure range <small>Note 1)</small>	For 0.4 MPa setting	Ex.) ARP30P-02BG	0.005 to 0.4 MPa	
	For 0.2 MPa setting	Ex.) ARP30P-02BG-1	0.005 to 0.2 MPa	
	For 0.6 MPa setting	Ex.) ARP30P-02BG-3	0.008 to 0.6 MPa	
Sensitivity		Within 0.2% F.S.		
Repeatability		Within $\pm 1\%$ F.S. (or ± 3 kPa *1)		
Air consumption	For 0.4 MPa setting	Ex.) ARP30P-02BG	1 ℓ /min (ANR) or less (at P2=0.4 MPa)	
	For 0.2 MPa setting	Ex.) ARP30P-02BG-1	0.6 ℓ /min (ANR) or less (at P2=0.2 MPa)	
	For 0.6 MPa setting	Ex.) ARP30P-02BG-3	1.4 ℓ /min (ANR) or less (at P2=0.6 MPa)	
Pressure port size <small>Note 2)</small>		1/8	1/8	1/4
Ambient and fluid temperature		-5 to 60°C (No freezing)		
	With digital pressure switch	Ex.) ARP30P-02BE1	-5 to 50°C (No freezing)	
Construction		Bleed type		
Weight (kg)		Approx. 0.18 (ARP20-02)	Approx. 0.3 (ARP30-03)	Approx. 0.5 (ARP40-04)

Note 1) When products with reverse flow function (ARP20K/30K/40K) are chosen, set the inlet pressure 0.05 MPa or higher than the set pressure.

Note 2) Port thread is not provided for products with square embedded-type pressure gauges.

SMC Corporation

Akihabara UDX 15F,
4-14-1, Sotokanda, Chiyoda-ku, Tokyo 101-0021, JAPAN
Phone: 03-5207-8249 Fax: 03-5298-5362
URL <http://www.smcworld.com>
© 2007 SMC Corporation All Rights Reserved

Specifications are subject to change without prior notice and any obligation on the part of the manufacturer.

D-KS

1st printing LX printing LX 11350KS Printed in Japan.

This catalog is printed on recycled paper with concern for the global environment.